



PACP
PORTUGUESE AMERICAN CITIZENSHIP PROJECT

A NON-PARTISAN INITIATIVE TO PROMOTE CITIZENSHIP AND CIVIC INVOLVEMENT

**ST. ANTHONY'S PARISH
NEW BEDFORD, MA**

**EVALUATION
OF
THE 2012 ELECTIONS**

**PREPARED
APRIL 8, 2013**

Supported by Luso-American Foundation
Government of the Autonomous Region of the Azores
Business and Community Leaders in the Portuguese American Community

REPORT CONTENTS

Statistics and Summary of Work	2
Results	2
Results Graphs	3
Voter Turnout Summary	3
Voter Turnout by Age	4
Voter Turnout by Age and Gender	4
Voter Turnout by Age and Gender	5
Voter Turnout - November 2012 by Gender and Party	6
Voter Turnout – 2008 vs. 2012 Presidential Elections	7
Appendices	8
Registered Voters by Age and Gender	9
Registered Voters by Age and Party	10
Registered vs. Actual Voters by Age and Gender	
November 2012	11
Registered vs. Actual Voters	12
Actual Voters by Gender and Party – November 2012	13
Voted in both 2008 and 2012 Presidential Elections	14
Voted in all last three elections	14

Key Statistics – 2012

Voter turnout data received from the New Bedford Board of Election Commissioners, February 28, 2013.

St. Anthony's Parish (*City of New Bedford in italics*)

- All Household Members registered to vote: 250 (51,575)
- Voter Turnout - March 2012: 20.5% (8.5%)*
- Voter Turnout - September 2012: 28.8% (14.8%)
- Voter turnout – November 2012: 77.2% (58.8%)

* No reminder postcards were sent out for the March, 2012 election.

Summary of Work

St. Anthony's has been an active participant in the Portuguese American Citizenship Project since 2003.

For the September and November, 2012 elections, postcards were sent out to each parish household where at least one household member was registered to vote. No cards were sent out for the March, 2012 election.

Results

St. Anthony's voter turnout for the March, September and November 2012 elections was consistently and often significantly higher than citywide turnout. Voter turnout for the September Primary Elections was 28.8%, as compared to the city turnout of 14.8% while voter turnout for the November General Elections was 77.2%, which was significantly higher than the citywide turnout of 58.8%.

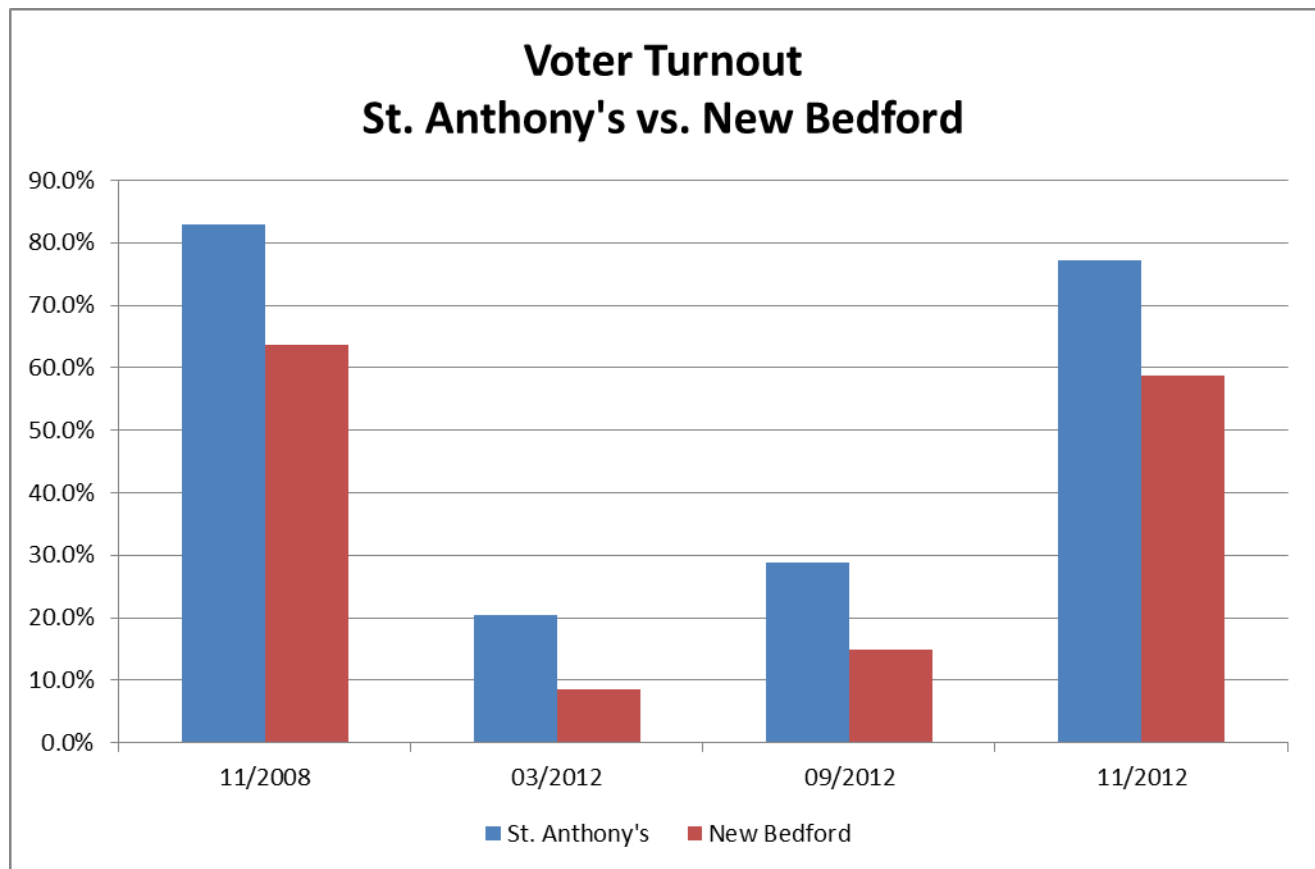
As noted above, no reminder cards were sent out for the March 2012 local election. Even so, voter turnout in March was 20.5%, which was significantly higher than the citywide turnout of 8.5%.

Voter turnout is not uniform across age groups and gender. St. Anthony's voter turnout for all age groups exceeded citywide turnout in all three 2012 elections. Older voters had the higher turnout rates in the March and September elections, while turnout was high in all age groups for the November presidential election.

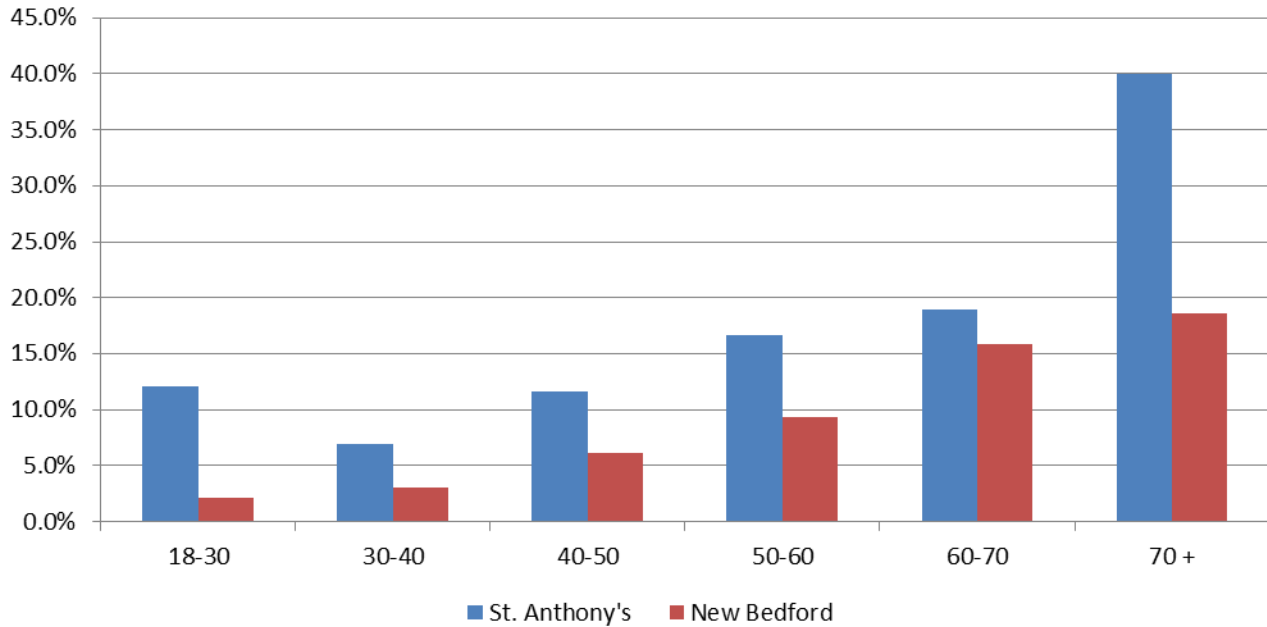
More women than men are registered to vote in most age groups, with men outnumbering women only in the 30-40 and 50-60 age groups. Voter turnout for women tended to be higher as well. Turnout for men was slightly higher among 18-30 year olds and significantly higher for those over 70 years old.

The following graphs summarize voter turnout by age, gender and political party affiliation.

Results Graphs

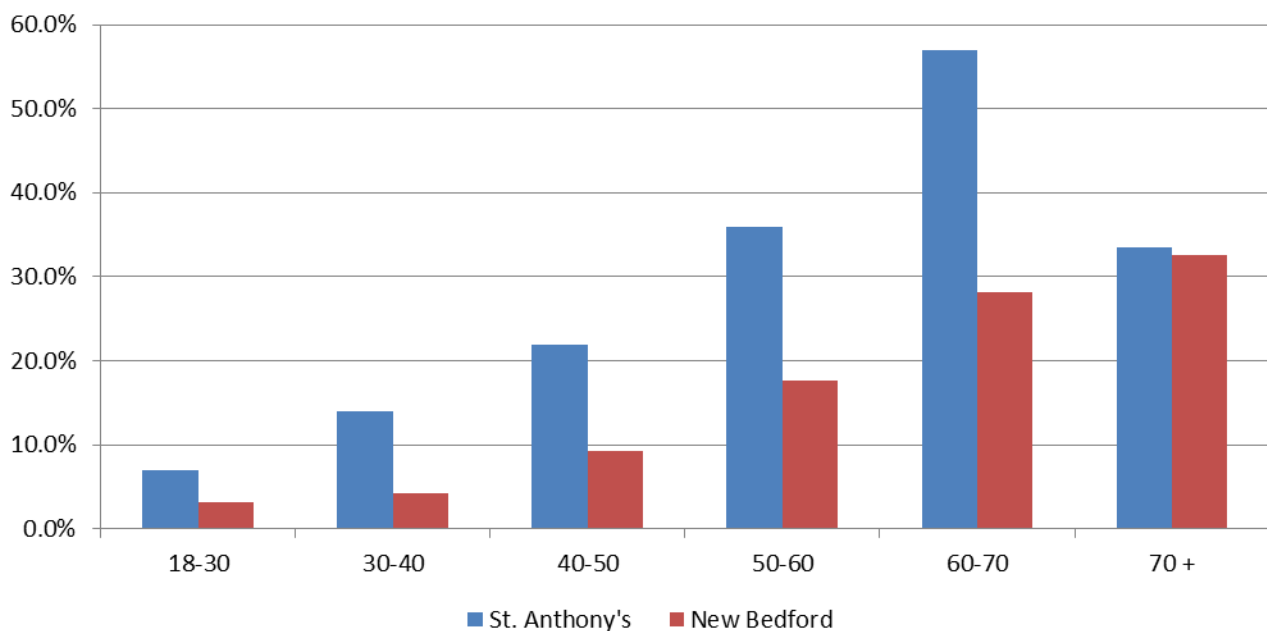


Turnout By Age - March 2012 St. Anthony's Parish vs. New Bedford

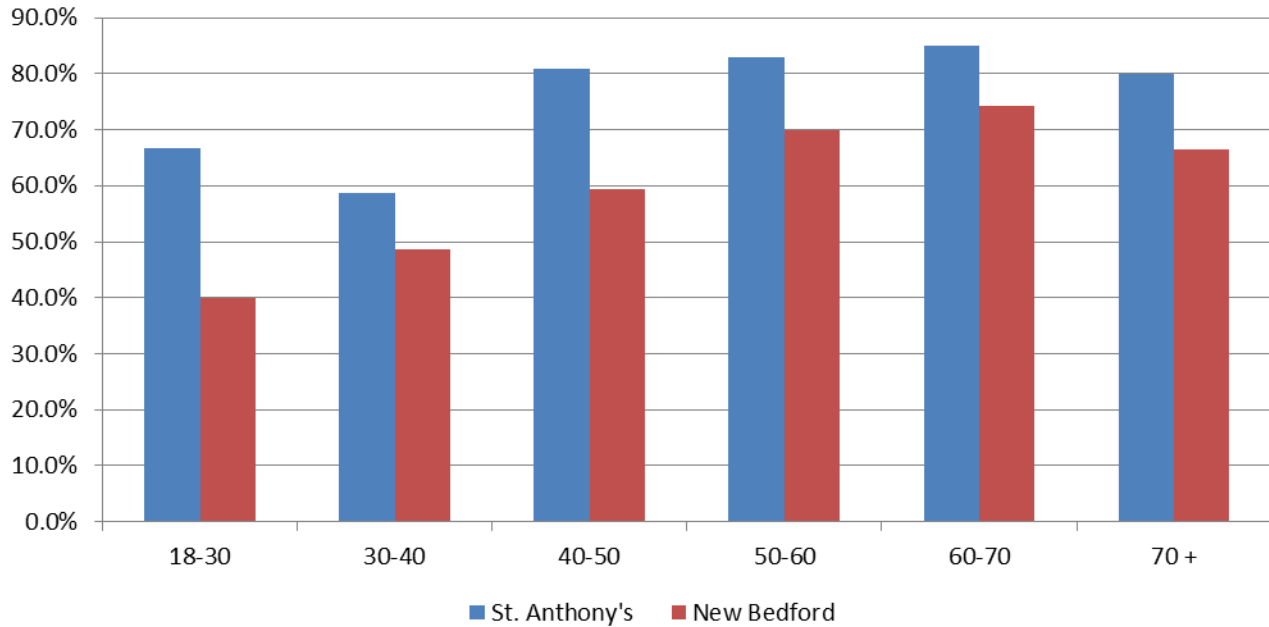


* Reminder postcards were not sent out for the March, 2012 election.

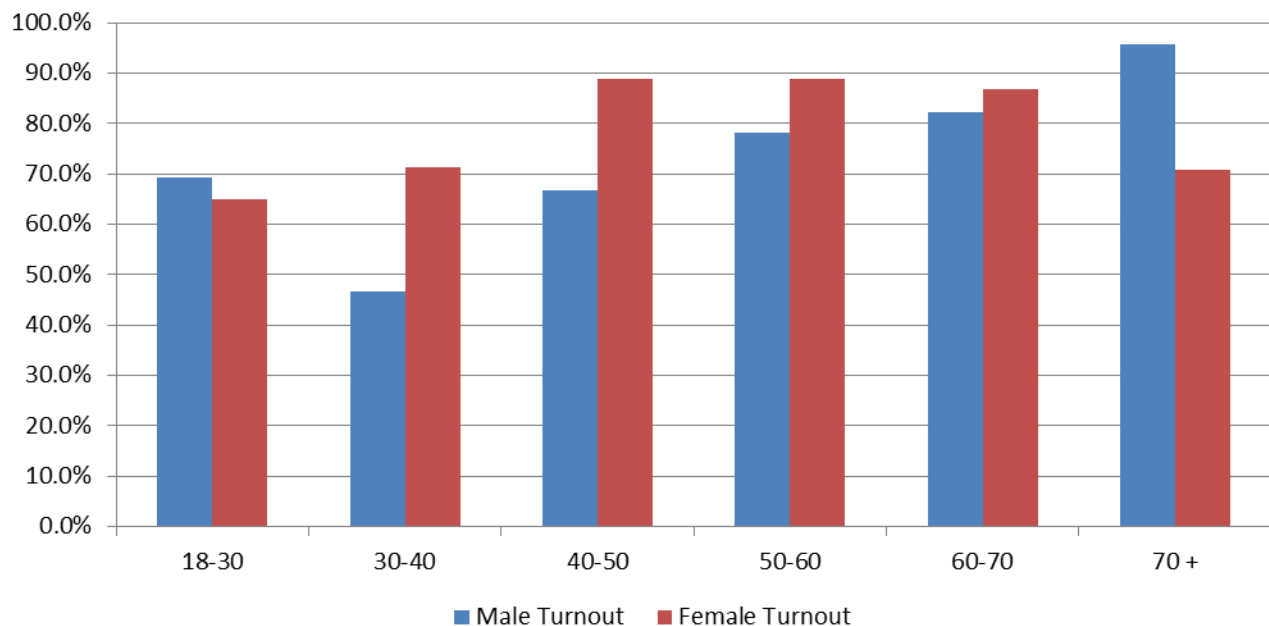
Turnout By Age - September 2012 St. Anthony's Parish vs. New Bedford



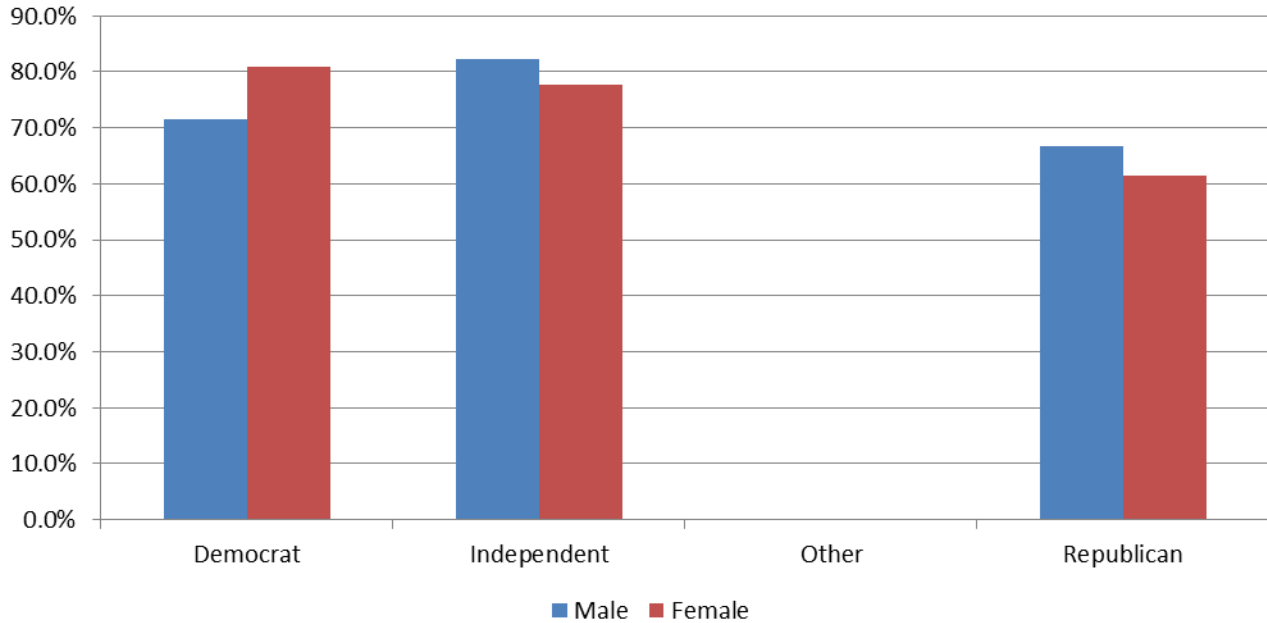
Turnout By Age - November 2012 St. Anthony's Parish vs. New Bedford



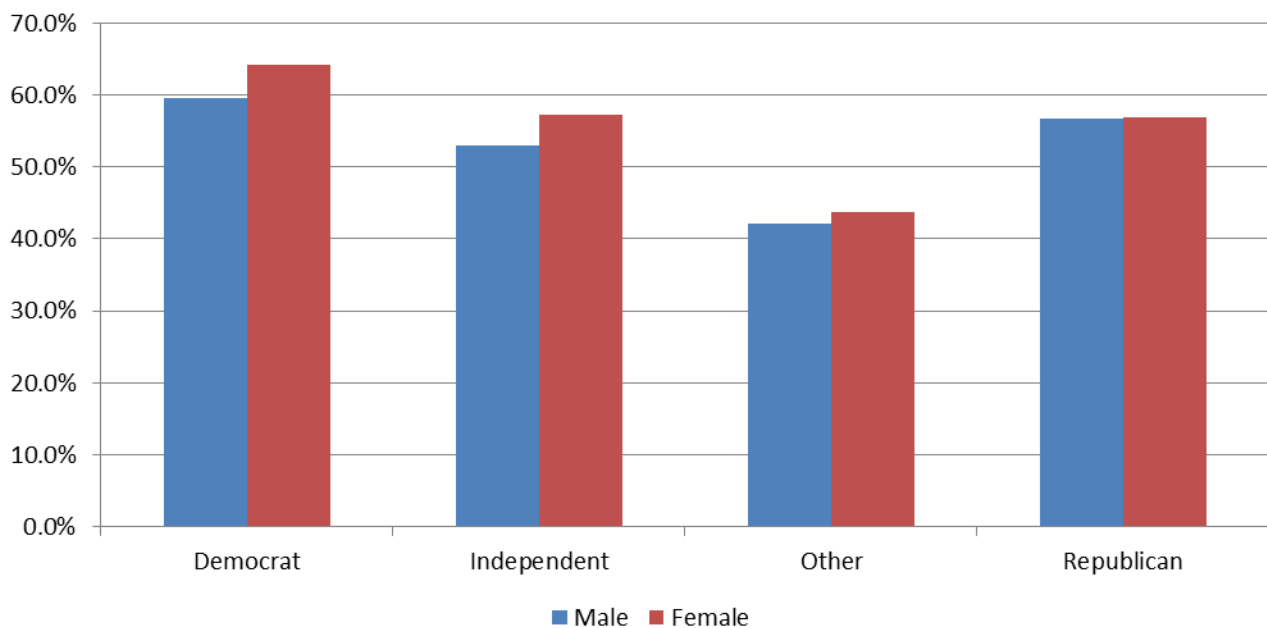
Voter Turnout by Age and Gender November 2012 St. Anthony's Parish



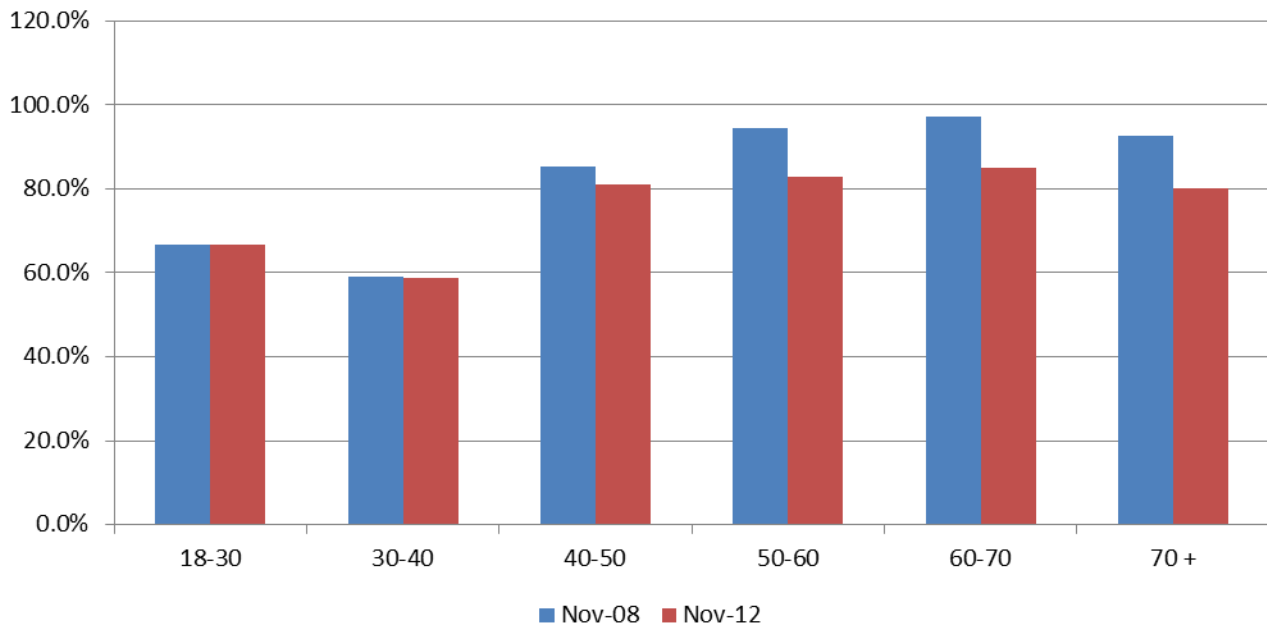
Voter Turnout - November 2012 Election St. Anthony's By Gender and Party



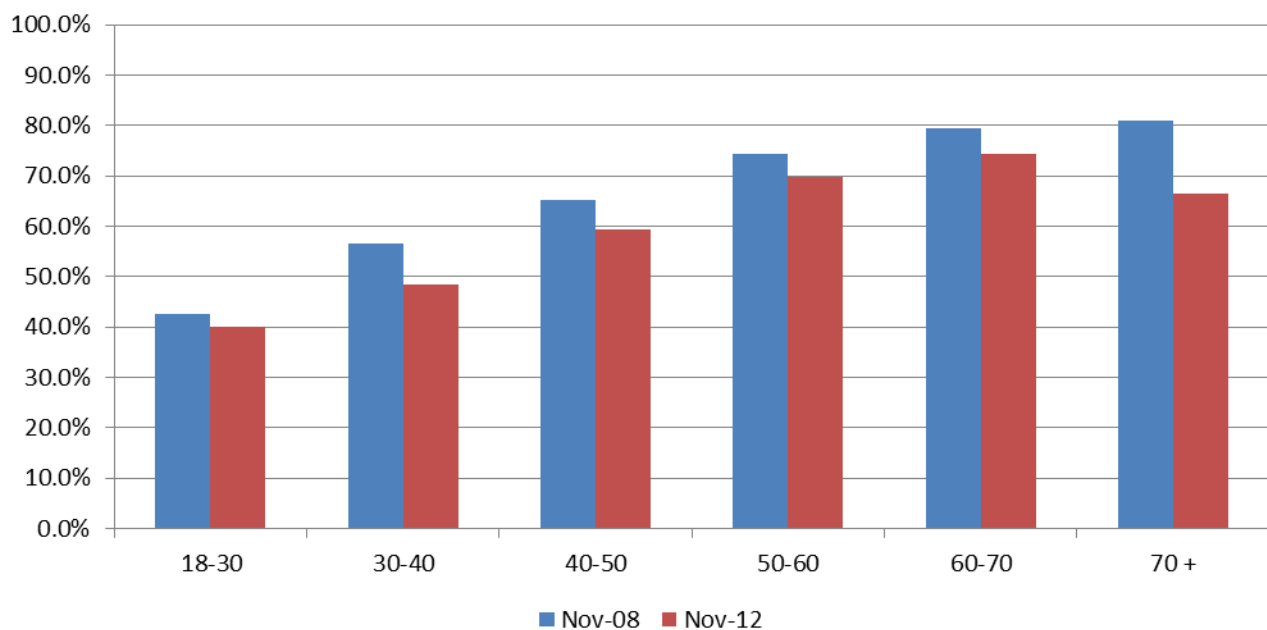
Voter Turnout - November 2012 Election New Bedford By Gender and Party



**Voter Turnout
2008 vs. 2012 Presidential Elections
St. Anthony's by Age**



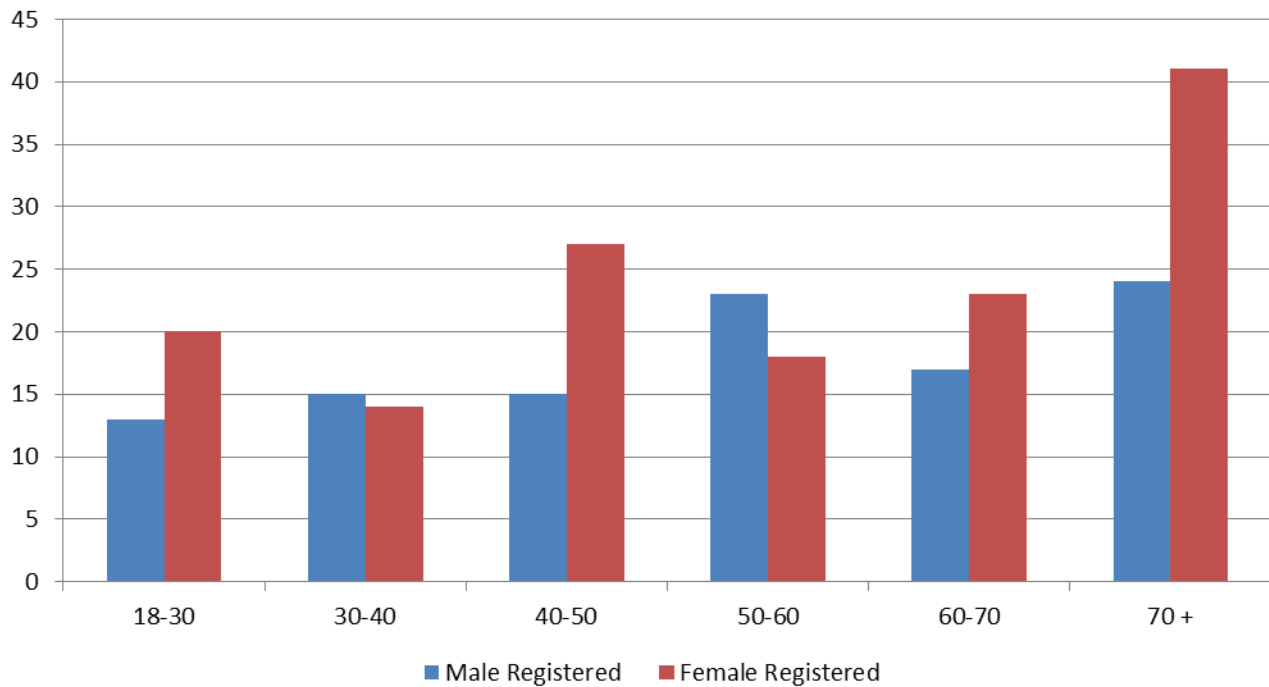
**Voter Turnout
2008 vs. 2012 Presidential Elections
New Bedford by Age**



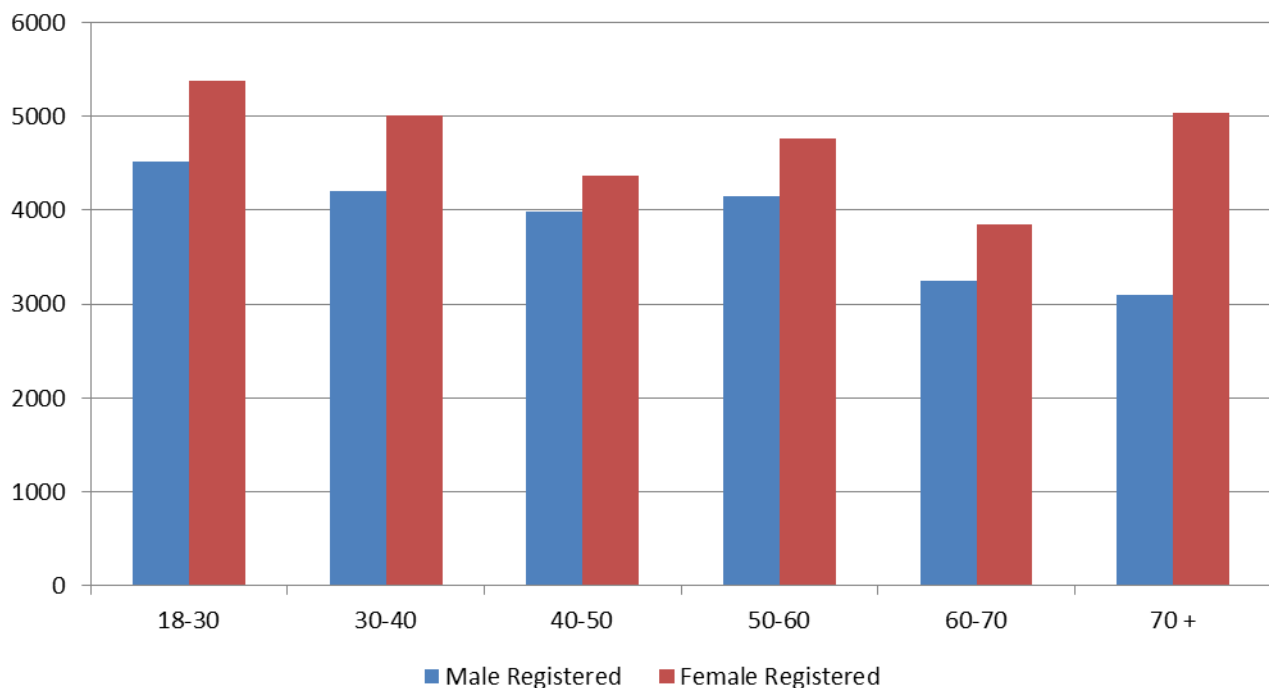
Appendices

Registered Voters by Age and Gender	9
Registered Voters by Age and Party	10
Registered vs. Actual Voters by Age and Gender	
November 2012	11
Registered vs. Actual Voters	12
Actual Voters by Gender and Party – November 2012	13
Voted in both 2008 and 2012 Presidential Elections	14
Voted in all last three elections	14

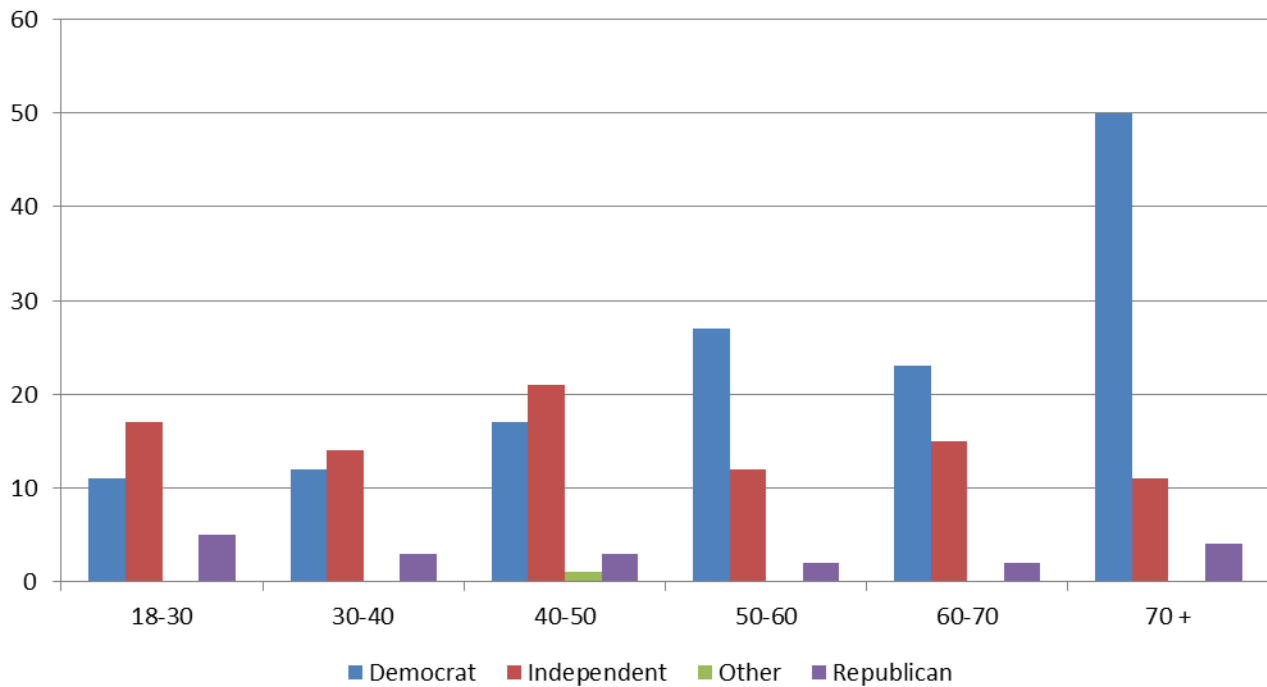
Registered Voters by Age and Gender St. Anthony's Parish



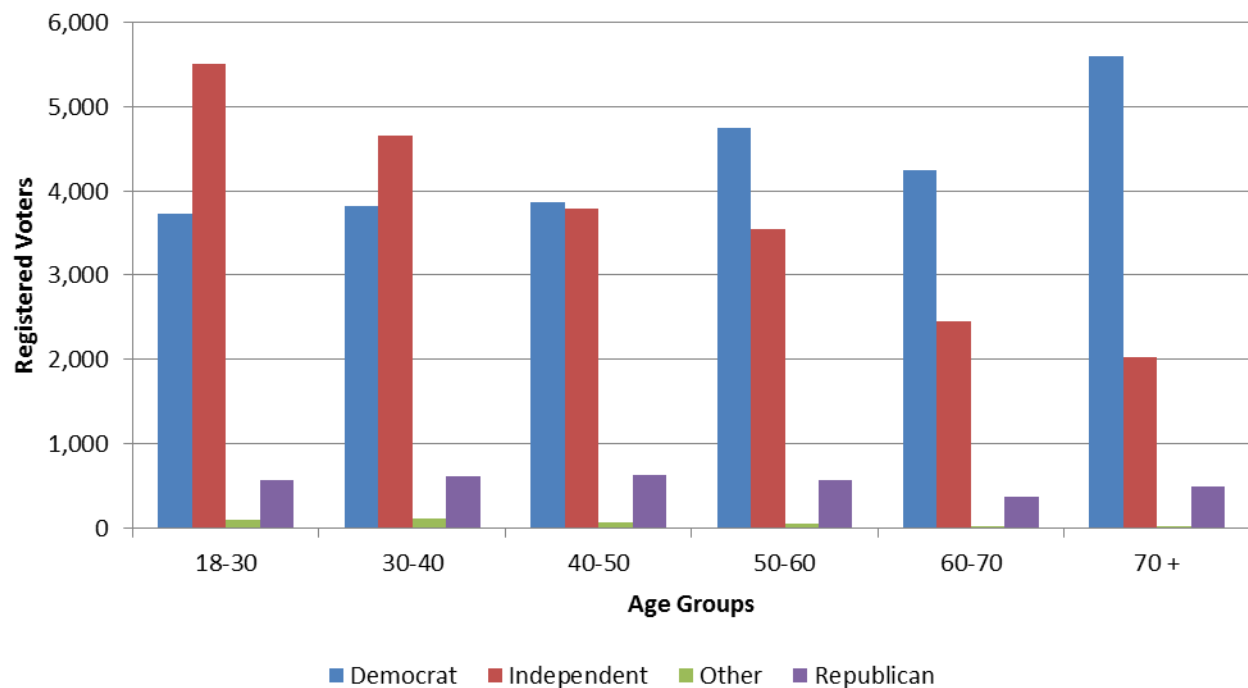
Registered Voters by Age and Gender New Bedford



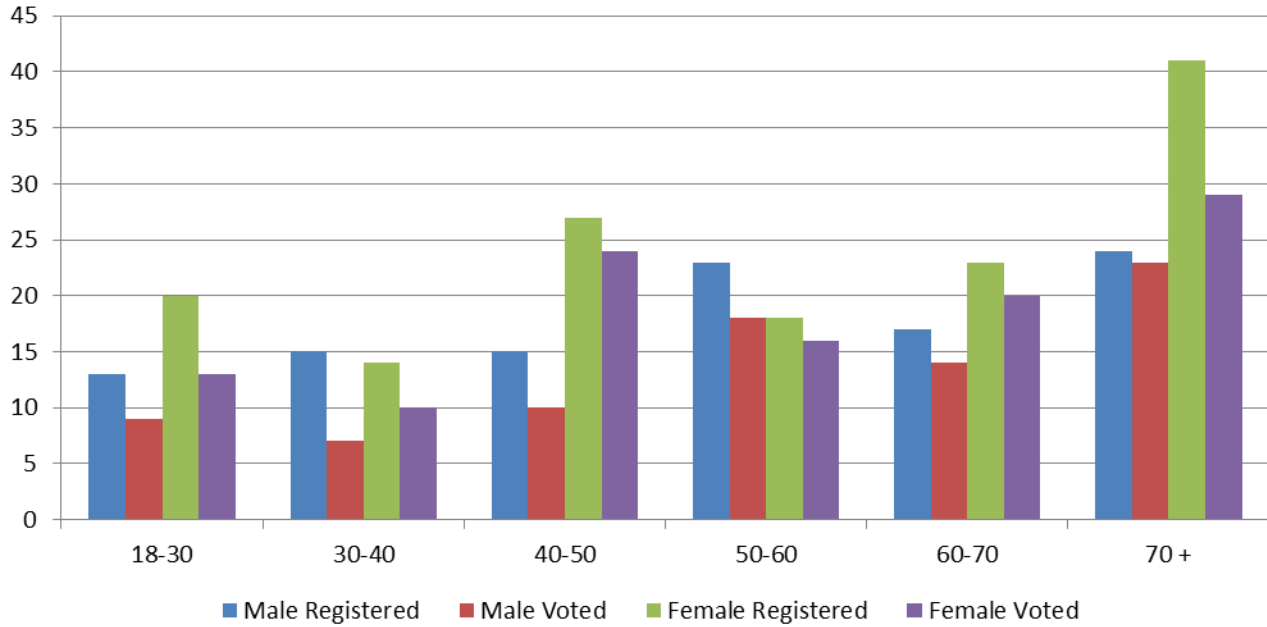
Registered to Vote by Age and Party St. Anthony's - November 2012



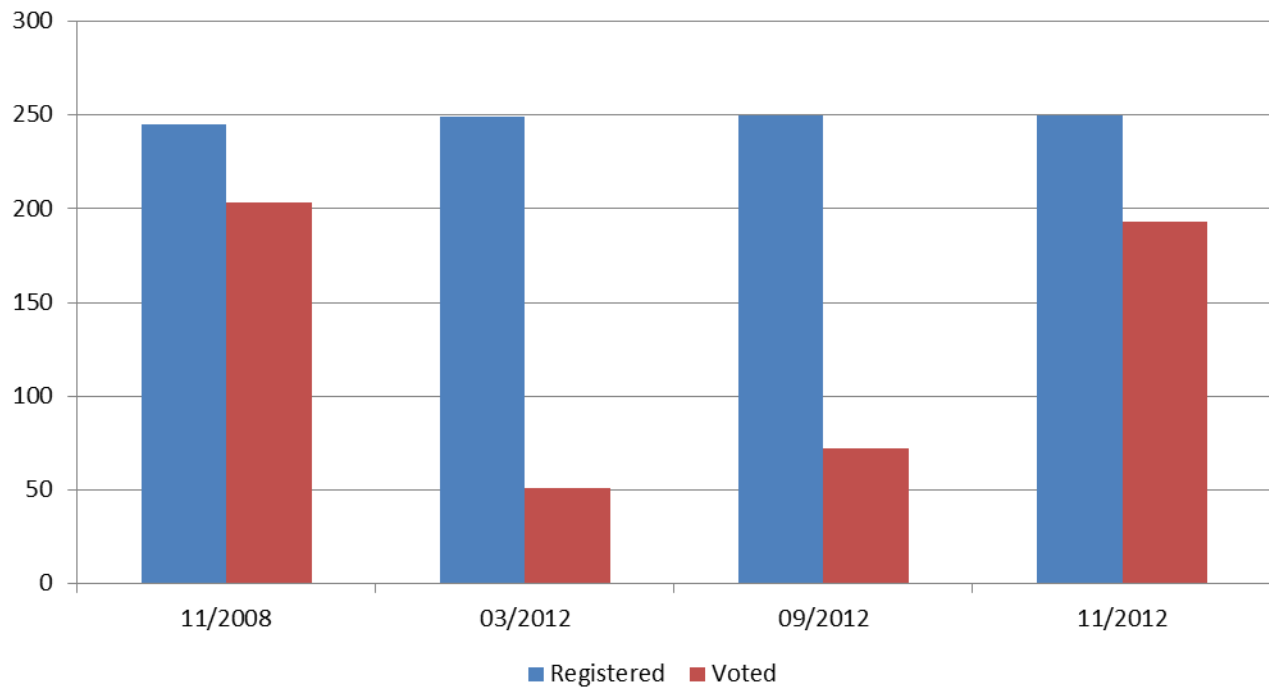
Registered Voters by Age and Party New Bedford



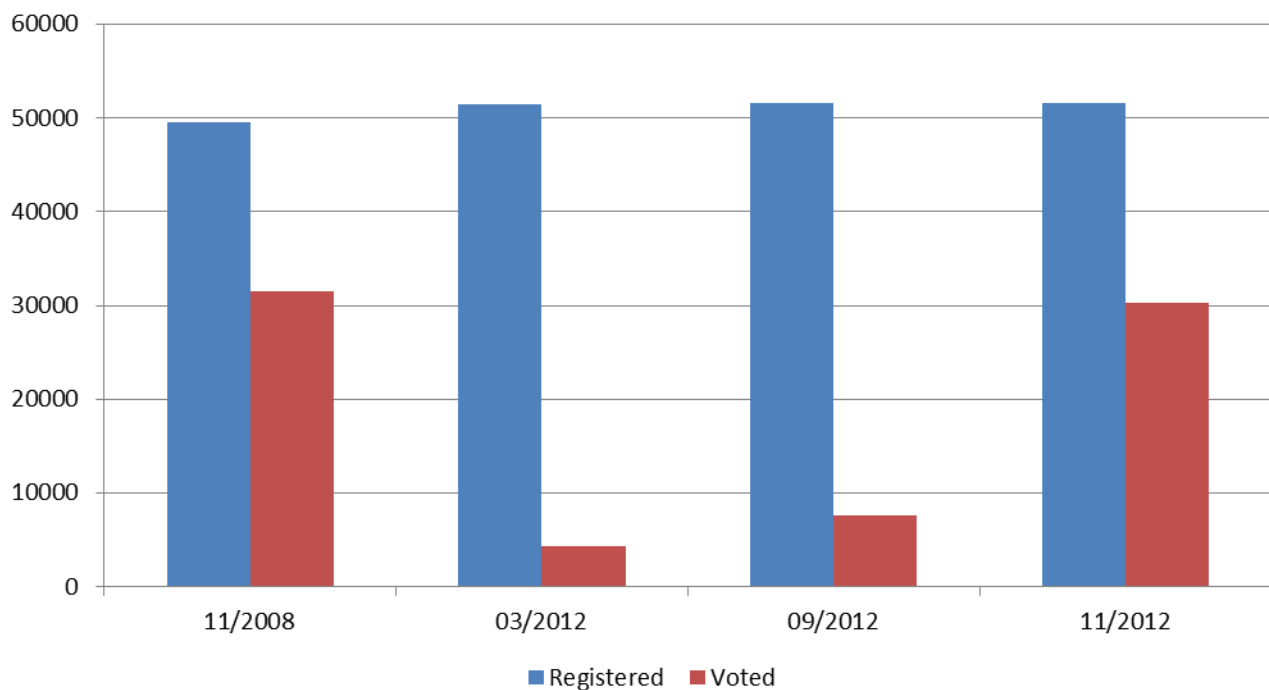
Voter Turnout - November 2012 St. Anthony's Parish By Age and Gender



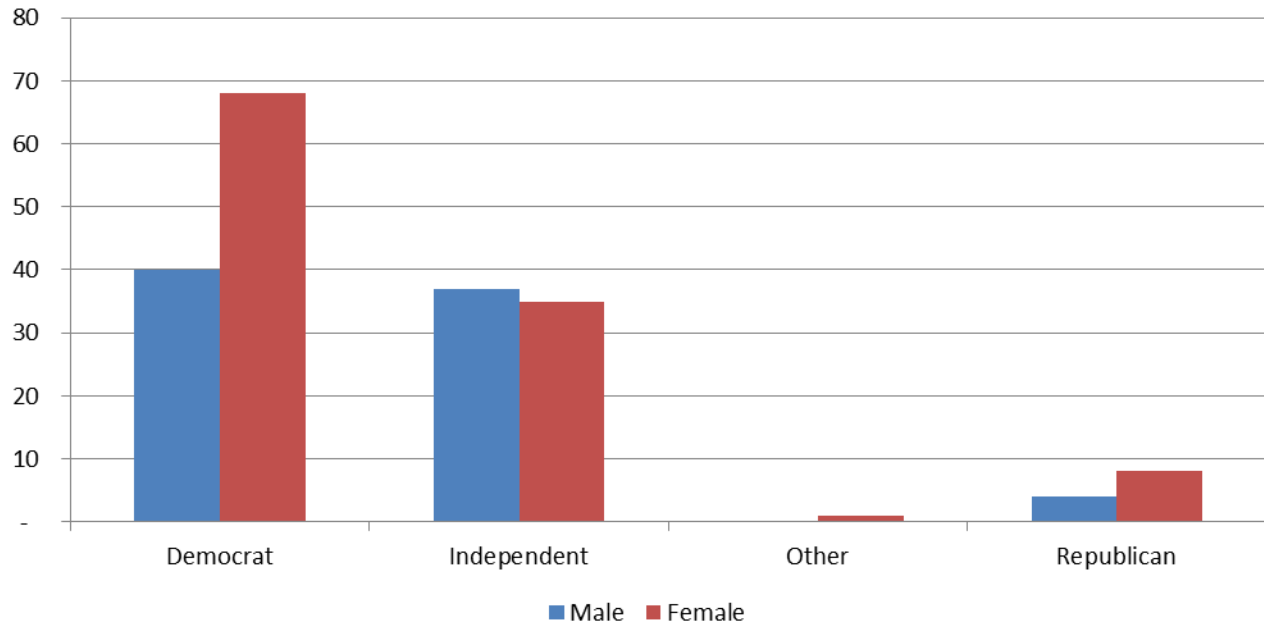
Registered Voters vs. Actual Voters St. Anthony's Parish



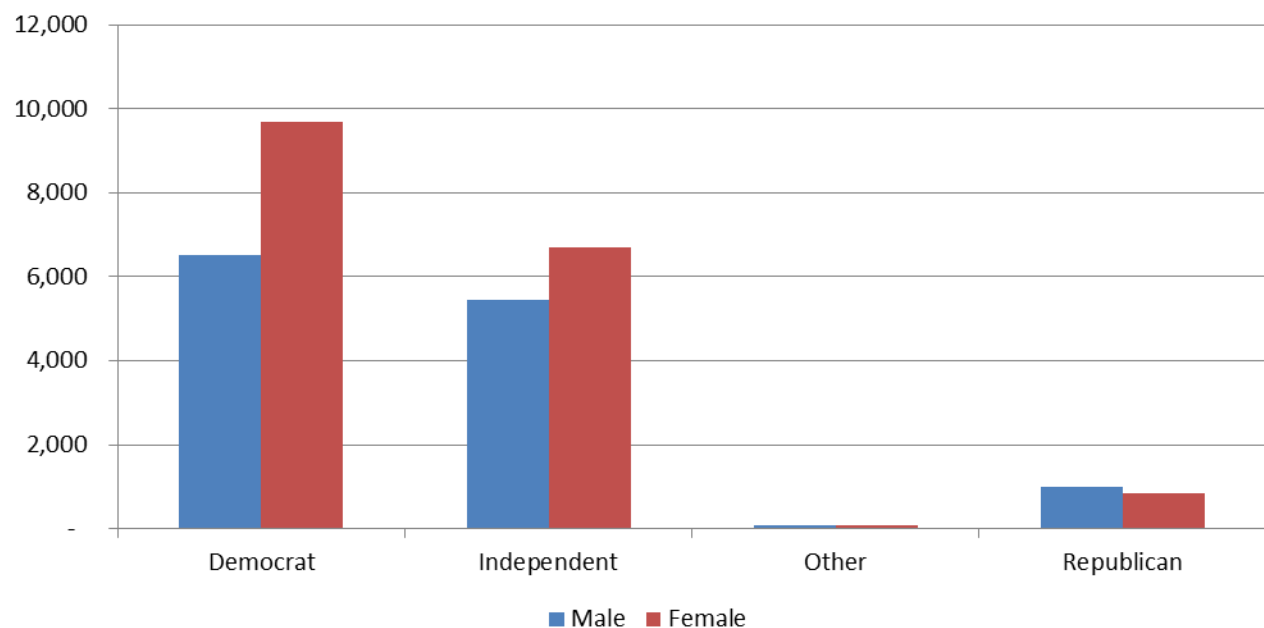
Registered Voters vs. Actual Voters New Bedford



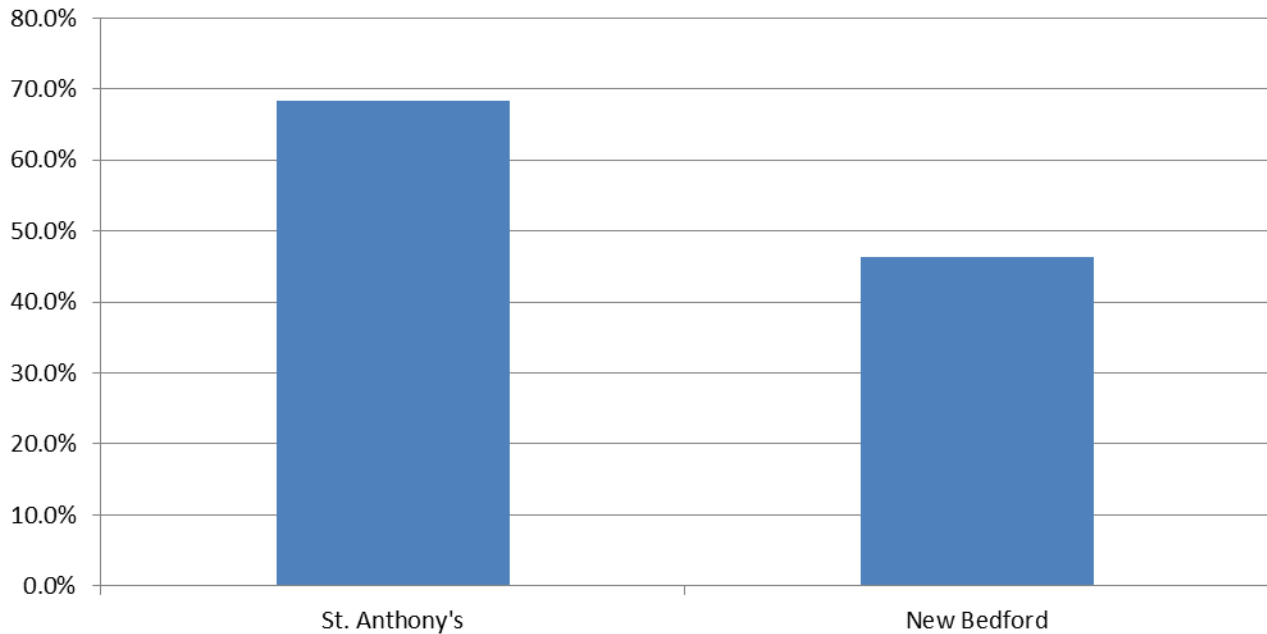
**Voted in November 2012 Election
St. Anthony's
Actual Voters By Gender and Party**



**Voted in November 2012 Election
New Bedford
Actual Voters By Gender and Party**



Voter Turnout
Voted in Both 2008 and 2012 Presidential Elections
St. Anthony's vs. New Bedford



Voter Turnout
Voted in Last 3 Elections
St. Anthony's vs. New Bedford

